

South Academy Residence Hall
412 Academy Street



IN CASE OF AN EMERGENCY

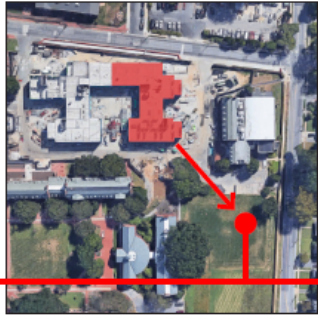
FIRE/GAS LEAK/FLAMMABLE LIQUID SPILL/ETC

- Don't risk self - evacuate the building - go **200** feet from building
- Sound evacuation alarm - pull fire alarm near exit - verbally yell fire
- Call University Police at **831-2222**, red phone or yellow emergency phone with push button
- Call **911**

PERSONAL SAFETY TIPS

- Know where your primary and secondary exits are at all times (memorize your evacuation plan if available)
- Locate emergency equipment before the emergency
- Use a fire extinguisher if trained and necessary—Do not delay evacuation
- Never use elevators to exit
- Feel door and knob with the back of hand to see if it is hot
- Look for signs of smoke seepage around openings
- If door is hot or smoke seepage is present do the following:
 - Seal openings with wet towels, sheets, clothes, etc.
 - Open window(s) for ventilation if possible (do not break the glass)
 - Re-contact university police and 911(note any special needs)
 - Attract attention by yelling, hanging something from the window, etc
 - Stay low (crawl) in the room since the best air will be at the lowest point
- If you must exit through a smoke filled room or corridor, the following actions should be taken:
 - Stay as low as possible to the floor (crawl to the nearest exit)
 - Place a wet towel over your mouth and nose
 - Take short breaths
 - Keep calm and use common sense
- Never re-enter a burning building to try and save personal possessions!

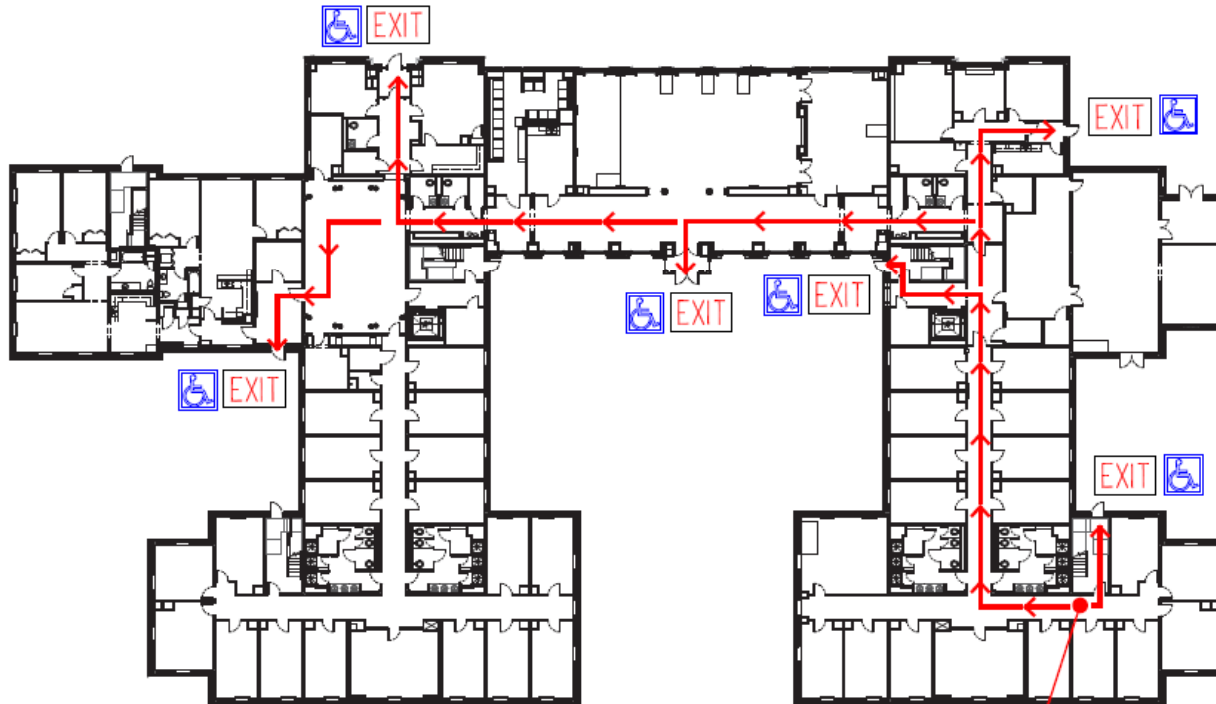




ADA ACCESS



EMERGENCY GATHERING POINT - 200'



YOU ARE HERE

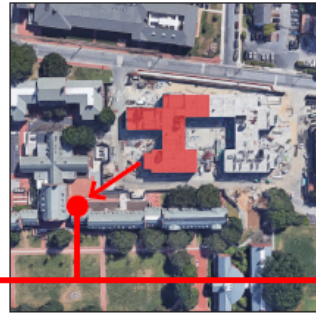
EMERGENCY GATHERING POINT - 200'



SOUTH ACADEMY RESIDENCE HALL

412 Academy Street, Newark, DE
EMERGENCY EVACUATION PLAN

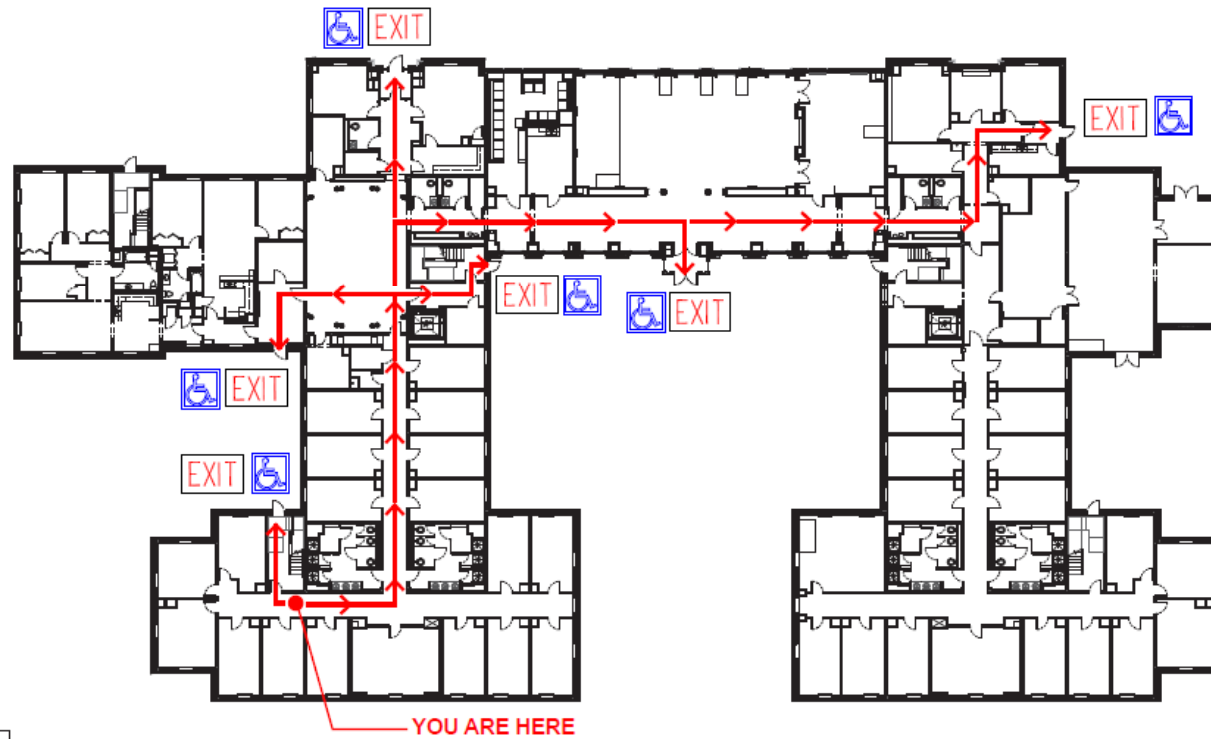
1st Floor South Evacuation Plan



 ADA ACCESS



 EMERGENCY GATHERING POINT - 200'



SOUTH ACADEMY RESIDENCE HALL

412 Academy Street, Newark, DE
EMERGENCY EVACUATION PLAN

 EMERGENCY GATHERING POINT - 200' 

1st Floor North Evacuation Plan



 ADA ACCESS



 EMERGENCY GATHERING POINT - 200'



YOU ARE HERE

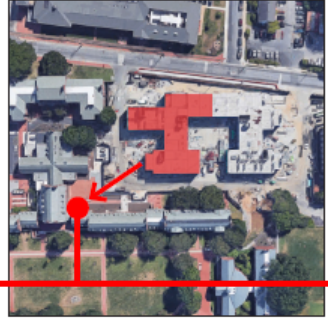
 EMERGENCY GATHERING POINT - 200'



SOUTH ACADEMY RESIDENCE HALL

412 Academy Street, Newark, DE
EMERGENCY EVACUATION PLAN

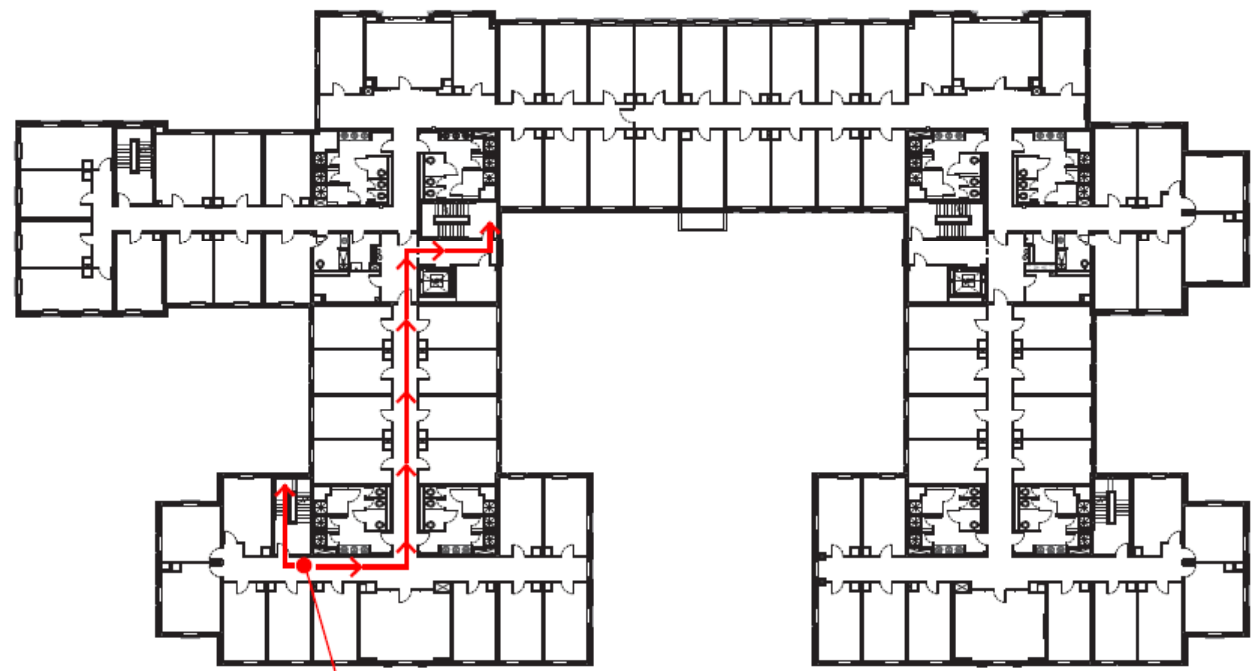
2-4 Floors South Evacuation Plan



 ADA ACCESS



 EMERGENCY GATHERING POINT - 200'



YOU ARE HERE



SOUTH ACADEMY RESIDENCE HALL

412 Academy Street, Newark, DE
EMERGENCY EVACUATION PLAN

 EMERGENCY GATHERING POINT - 200' 

2-4 Floors North Evacuation Plan